

# WHOLESALE BUYING GUIDE



**Inukshuk** TM&C  
PROFESSIONAL DOG FOOD

# GUIDE OVERVIEW

---

## 1 Wholesale Information

Pricing, formula and pallet options

## 2 How to Buy

Commitment-free quotes & payment details

## 3 Shipping

Shipping, delivery and accessory fees explained

## 4 Storage & Shelf Life

Storage tips and formula shelf life

## 5 Reselling Inukshuk

How it works at Inukshuk

## 6 Feeding Inukshuk to Your Pack

Feeding guides and choosing the right formula

## 7 The Inukshuk Edge

What makes Inukshuk different

## 8 Why Inukshuk?

Optimal nutrition developed for performance

# WHOLESALE INFORMATION

---

1

## MINIMUM ORDER: ONE FULL PALLET

**65** Inukshuk 26/16  
Marine 26/16  
**BAGS** Inukshuk 30/25  
Marine 30/25  
**33 lbs**

**50** Inukshuk 32/32  
**BAGS**  
**44 lbs**

### MIXED FORMULAS

A mixed pallet with our 33 lbs. bags (any combination of 26/16, 30/25, Marine 26/16, or Marine 30/25) & 44lbs bag (32/32) may contain up to 65 bags total or 2200 lbs. max weight. If the pallet includes 35 or more bags of 32/32, the maximum number of bags on that pallet is 55, due to weight limits.



### CANADIAN ORDERS

Shipping is calculated separately based on current rates and your delivery location.

Payment is made in CAD.



### U.S. ORDERS

Freight is included in all U.S. wholesale pricing.  
Payment is made in USD.



# HOW TO BUY

---

# 2

## 1

### **REQUEST A QUOTE**

Start by requesting a commitment-free quote. You'll receive a custom price, including shipping and any applicable delivery fees, good for 30 days, delivered straight to your inbox.

## 2

### **ORDERS NEED TO BE PAID IN FULL**

Once you're ready to move forward, payment is made directly to your Inukshuk salesperson. We accept Visa, Mastercard, American Express, wire transfers, and e-Transfers. Orders are released for shipping once payment is received in full.

## 3

### **WE SHIP TO YOU**

We arrange delivery based on your location and preferences, whether farm, residential, commercial, or remote. Our team coordinates everything with the shipping carrier and provides tracking once it's on the way.

[REQUEST YOUR QUOTE NOW](#)

# SHIPPING

---

3

## DIRECT DELIVERY

We ship your order directly to your location and handle all logistics with the shipping company, including tracking and coordination.

### DELIVERY OPTIONS

We deliver to a wide range of locations including:

- Farms
- Homes (including rural and remote addresses)
- Government facilities
- Commercially zoned buildings

### PICK-UP OPTIONS

You can also arrange pick-up from one of our regional warehouse locations:

- Bangor, Maine
- Fredericton, New Brunswick
- Edmonton, Alberta
- Fairbanks, Alaska
- Anchorage, Alaska

## ACCESSORY FEES

Additional charges may apply based on your delivery location and access needs. Your quote will always reflect these specifics so you know exactly what to expect.

These may include:

- Residential delivery
- Lift gate service
- Fuel surcharges
- Farm or remote access
- Terminal pickup
- Inside delivery
- Call-ahead scheduling, etc.

# RESELLING

# 4

## RESELL INUKSHUK WITH CONFIDENCE

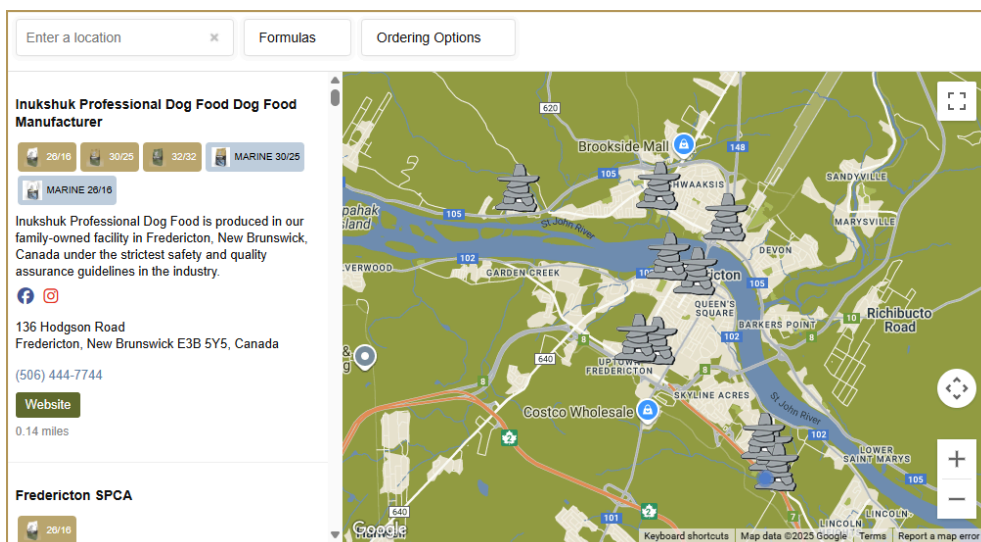
- Buy by the pallet, resell freely
- No exclusivity, no barriers, just opportunity.
- Marketing support & Reseller Directory access
- Backed by trusted customer service & quality assurance

## NO APPLICATION. NO TERRITORY RESTRICTIONS.

- Purchase by the pallet and start reselling right away
- Operate locally or online, it's up to you
- List your business on our [Trusted Reseller Map](#)

## WHY IT WORKS

- **Free Market Model:** Sell on your terms, without exclusivity or limitations
- **Marketing Support:** Gain access to our professionally designed materials
- **Smart Pricing Strategy:** Stay competitive by pricing just under the leading e-commerce option in your area
- **Reliable Support:** Our team is here to help, from customer service to nutrition expertise and event assistance



# STORAGE & SHELF LIFE

# 5

## STORAGE SOLUTIONS

Storing 50–65 bags might sound intimidating, but it's doable. Keep your food in a cool, dry place out of direct sunlight.

Need ideas? See what our community has shared: [Storage Tips](#)

## SHELF LIFE

**24**  
MONTHS  
Inukshuk 26/16  
Inukshuk 30/25  
Inukshuk 32/32

**18**  
MONTHS  
Marine 26/16  
Marine 30/25



# FEEDING

# 6

## FEEDING INUKSHUK TO YOUR PACK

Inukshuk's nutrient-rich formulas are designed to deliver more with less.

## FEED LESS, FUEL MORE

Whether you're feeding a working dog, a sport dog, or a companion animal, Inukshuk makes it simple to adjust portions as their energy needs change.

- Smaller portions with big results
- Better absorption = less cleanup
- More value per bag

## FOR BREEDERS & PUPPIES






- Puppies: Start with 26/16 or Marine 26/16 at weaning for steady, healthy development.
- Lactating Females: Increase calories with 30/25, or free-feed 26/16 to support energy demands.
- Growth Phase: Adjust portions and formulas based on activity level and body condition.

## CHOOSING THE RIGHT FORMULA

Not sure which formula fits your dog?

All Inukshuk formulas share the same high-quality core ingredients, making it easy to transition between them as needed.

[Choosing a Formula Guide](#)

					
5 FORMULAS	26/16	30/25	MARINE 26/16	MARINE 30/25	32/32
WE RECOMMEND					
SKIN, COAT, JOINT, & STOOL QUALITY					
PUPPY, PREGNANT AND ALL LIFE STAGES					
HIGH ENERGY DIET					
FOOD SENSITIVE DOGS					
WEIGHT GAIN					
WEIGHT MANAGEMENT					
SHORT SPRINTS					
HIGH PERFORMANCE					
EXTREME ENDURANCE					



# THE INUKSHUK<sup>7</sup> EDGE

---



## **VACUUM INFUSION TECHNOLOGY**

Healthy fats are an important component of a dog's diet. During our infusion process, air is pulled out of the production chamber, allowing healthy oils to permeate the kibble, providing clean, dry, and nutritious food.



## **FINE GRIND PROCESS**

We use a specialized hammer mill that grinds ingredients to the consistency of flour. Fine grind means denser pellets, less bag dust, better oral health, and better nutrient absorption.



## **ONE-WAY VALVE BAGS**

Our one-way valve reduces oxidization and keeps food fresh. Fresher food delivers healthy fats and vitamins with more potency and flavor.

# WHY INUKSHUK?

---

8

Inukshuk provides high-performance, fixed-formula dog food that delivers consistent results. Our formulas are crafted with premium ingredients and backed by science to ensure peak health, performance, and longevity. Whether you're feeding a hardworking dog or a growing pup, we're here to fuel your pack for life.

We offer direct and retail access for the best value, with a commitment to quality and customer support at every step.





# READY TO GET STARTED?

GET A COMMITMENT-FREE QUOTE.

[REQUEST YOUR QUOTE NOW](#)



**Inukshuk** TM&C  
PROFESSIONAL DOG FOOD